



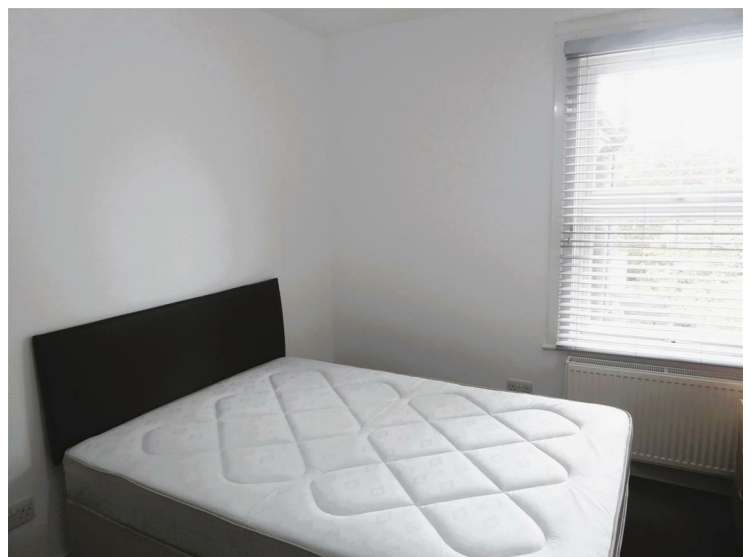
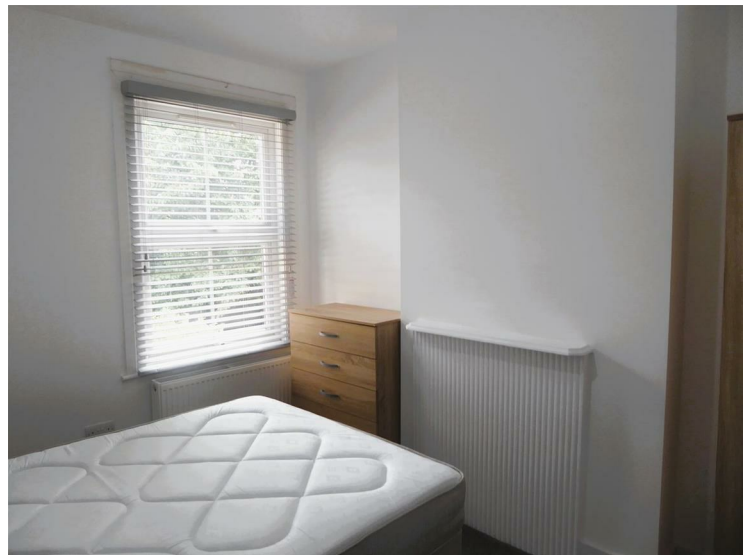
## **Cromwell Road, Hounslow, TW3 3QJ**

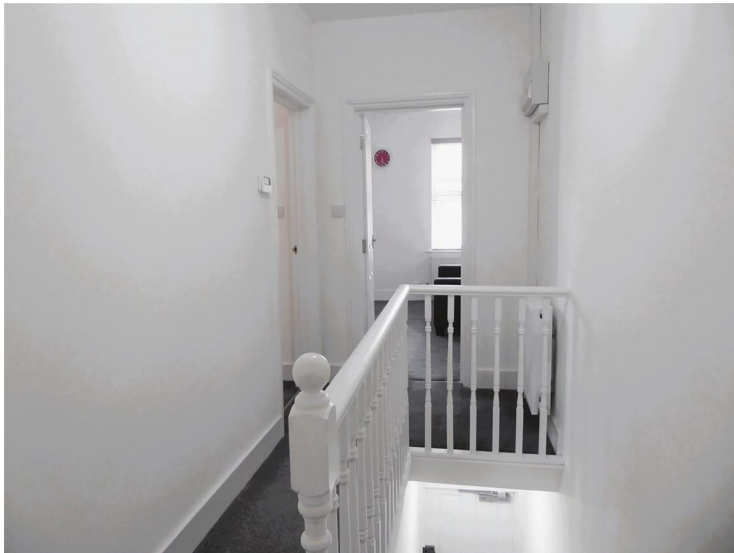
**£1,250 PCM**

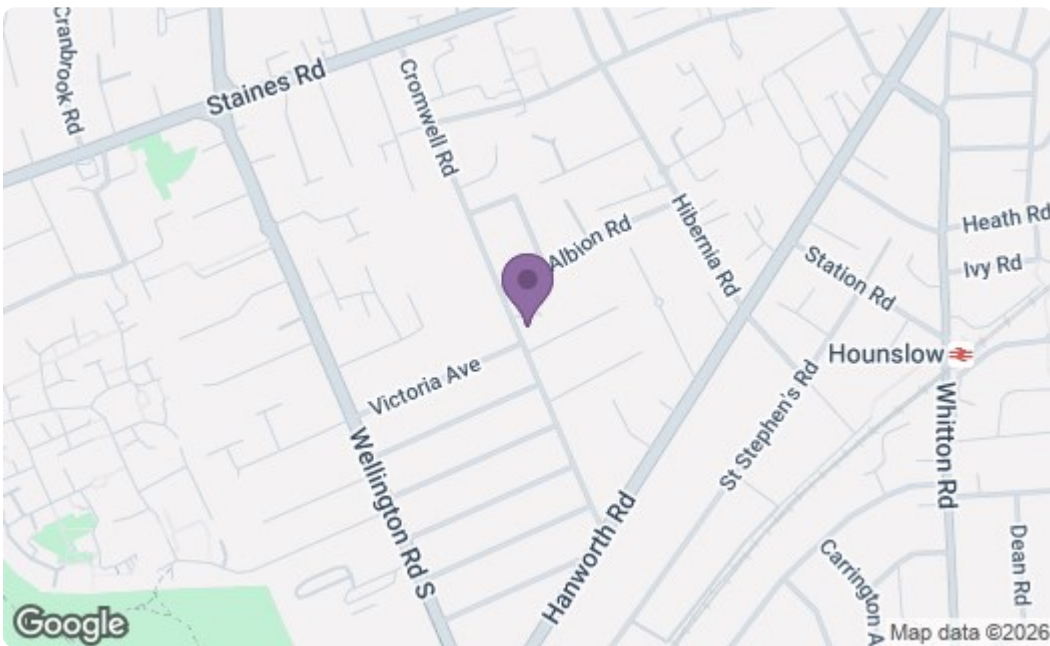
A one-bedroom first floor flat located in this popular residential area, conveniently positioned for access to Hounslow town centre, Hounslow Central Station Underground station and a range of additional transport links. The accommodation comprises a lounge, fitted kitchen, double bedroom, and bathroom. Further benefits include double-glazed windows and gas central heating. The property is offered furnished and will be available from 29th June.



A partner of  
*The Guild Of Professional Estate Agents*  
with a network of over 700 independent estate agents

Associated Office: 121 Park Lane, Mayfair, London W1K 7AG t 020 7318 7075







Energy Efficiency Rating		Current	Potential
Very energy efficient - lower running costs			
(92 plus) A			
(81-91) B			
(69-80) C			
(55-68) D			
(39-54) E			
(21-38) F			
(1-20) G			
Not energy efficient - higher running costs			
		69	77
<b>England &amp; Wales</b>		EU Directive 2002/91/EC 	
Environmental Impact (CO <sub>2</sub> ) Rating		Current	Potential
Very environmentally friendly - lower CO <sub>2</sub> emissions			
(92 plus) A			
(81-91) B			
(69-80) C			
(55-68) D			
(39-54) E			
(21-38) F			
(1-20) G			
Not environmentally friendly - higher CO <sub>2</sub> emissions			
		61	68
<b>England &amp; Wales</b>		EU Directive 2002/91/EC 	

A partner of  
**The Guild Of Professional Estate Agents**  
 with a network of over 700 independent estate agents

Associated Office: 121 Park Lane, Mayfair, London W1K 7AG t 020 7318 7075